

## 14 EMPLOYMENT

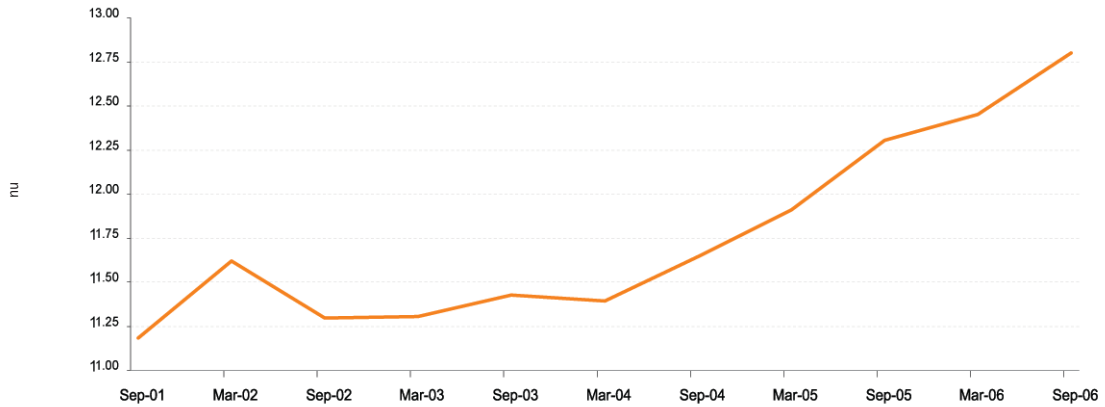
**Goal** To halve unemployment by 2014. Numerical target is approximately 16 million employed.

**Trend analysis** The recent improvement in job creation coincides with the period during which economic growth accelerated to over 4.5 per cent per year. If the employment creation performance achieved since March 2004 is maintained, the target will be met. This is only likely if the growth rate continues to improve, especially in areas with higher rates of labour absorption. Growth in the number of employed people has been particularly strong in the two years to September 2006 when over one million additional people were employed.

### EMPLOYMENT

million	Sep-01	Mar-02	Sep-02	Mar-03	Sep-03	Mar-04	Sep-04	Mar-05	Sep-05	Mar-06	Sep-06
Employment	11.18	11.62	11.30	11.30	11.42	11.39	11.64	11.91	12.30	12.45	12.80

### EMPLOYMENT



**Definition** Number of people employed  
**Data source** Statistics South Africa Labour Force Survey

## 15 UNEMPLOYMENT

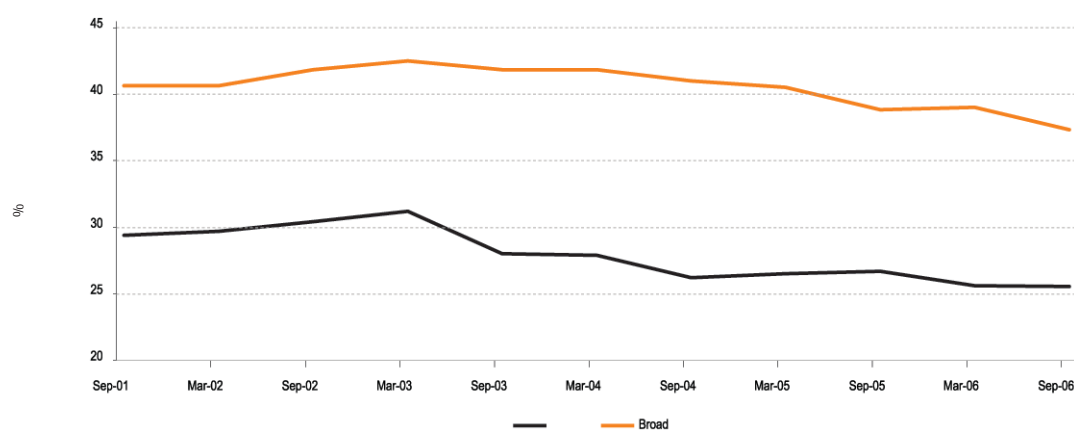
**Goal** The goal is to cut unemployment by at least half between 2004 and 2014, and to a maximum of 14 per cent in 2014.

**Trend analysis** The unemployment rate rose until 2003, at which point it began to fall. If unemployment continues to fall at the rate achieved since January 2003, we could halve unemployment by 2014. This would depend on a further acceleration of the rate of economic growth to 6 per cent between 2010 and 2014, increased investment in labour-intensive sectors, as well as further expansion of public works programmes and other second economy interventions. Unemployment remains particularly high with young people (under 35 years), African people and women, requiring targeting of employment programmes.

### UNEMPLOYMENT (BROAD AND NARROW)

%	Sep-01	Mar-02	Sep-02	Mar-03	Sep-03	Mar-04	Sep-04	Mar-05	Sep-05	Mar-06	Sep-06
narrow	29.4	29.7	30.4	31.2	28.0	27.9	26.2	26.5	26.7	25.6	25.5
broad	40.6	40.6	41.8	42.5	41.8	41.8	41.0	40.5	38.8	39	37.3

### UNEMPLOYMENT (BROAD AND NARROW)



**Definition** Number of people seeking employment and could not find any in last two weeks (narrow definition). Broad definition includes people who have been discouraged from seeking employment.

**Data source** Statistics South Africa Labour Force Survey

## 16 EXPANDED PUBLIC WORKS PROGRAMME

**Goal** To create one million work opportunities over the first five years of implementation (i.e. by 2009).

**Trend analysis** The Expanded Public Works Programme is implemented across four sectors, the infrastructure, environment and culture, social and economic sectors. Approximately 485 000 nett work opportunities were created since the inception of this programme.

### NET WORK OPPORTUNITIES CREATED

	Target	2004/05	2005/06	Dec 2006/07	Total	Total as % of 2009 target
Infrastructure	750 000	109 712	100 475	110 581	320 768	42.8%
Environment and culture	200 000	58 796	78 855	58 741	196 392	98.2%
Social	150 000	1 650	17 858	13 870	33 378	22.3%
Economic	12 000	4 687	1 833	1 263	7 783	64.9%
Annual total	174 845	199 021	184 455			
Cumulative total	1 000 000	174 845	373 866	558 321	558 321	55.8%

**Definition** Net jobs = total jobs created - jobs created using machine-intensive methods

**Data source** Department of Public Works, Expanded Public Works Programme quarterly reports